

# Braille Me User Guide V 1.2

Last updated on: 7/12/2017  
Inceptor Technologies Pvt. Ltd. (Innovision)

## Contents

<b>1. Introduction</b> .....	3
<b>1.1 Features of Braille Me</b> .....	4
<b>1.2 Document conventions</b> .....	4
<b>1.3 Inside the box</b> .....	5
<b>2. Orientation</b> .....	5
<b>3. Powering the device</b> .....	9
<b>3.1. Powering On/Off</b> .....	9
<b>3.2. Charging</b> .....	9
<b>4. Menu system</b> .....	10
<b>4.1. Panning Keys</b> .....	10
<b>4.2. Edit box</b> .....	11
<b>4.3. Cursor</b> .....	11
<b>4.3.1. Mode 1</b> .....	11
<b>4.3.2. Mode 2</b> .....	11
<b>4.4. Word wrap</b> .....	12
<b>5. File manager</b> .....	12
<b>5.1. Browse</b> .....	12
<b>5.1.1. Supported Files</b> .....	12
<b>5.2. Search</b> .....	12
<b>5.3. Open, Rename and Delete</b> .....	13
<b>5.4. New File</b> .....	13
<b>5.5. Editor</b> .....	14
<b>5.6. Preparing files for Braille Me</b> .....	16
<b>6. Bluetooth</b> .....	17
<b>6.1. Pair new device</b> .....	17
<b>6.2. Connecting to a smartphone</b> .....	18
<b>6.3. Using with BrailleBack</b> .....	19

6.4.	Using with VoiceOver .....	19
6.5.	Using with Braille Me app .....	19
7.	USB.....	20
7.1	Connecting with NVDA .....	20
7.2	Connecting with VoiceOver .....	21
7.3	Connecting with JAWS .....	21
7.4	Connecting as mass storage.....	21
8.	Configuration .....	21
8.1	Language setting .....	21
8.2	Factory reset.....	21
8.3	Date and time .....	22
8.4	Braille Test.....	22
8.5	Software version .....	22
8.6	Auto scroll time.....	22
9.	Battery level.....	22
10.	System Shutdown.....	23
11.	List of all commands .....	23
11.1.	Global commands for Braille Me .....	23
11.2.	Braille Back commands.....	24
11.3.	NVDA commands.....	25
12.	List of system notifications and errors.....	27
13.	Firmware upgrade .....	29
14.	Battery replacement.....	30
15.	Specifications.....	31
16.	Installing NVDA Add-on and driver .....	32
17.	FAQs.....	33
17.1.	Prospective User.....	33
17.2.	First time user .....	34
17.3.	Existing User .....	36
18.	Appendices.....	36
18.1.	Warranty information .....	36

## 1. Introduction

Braille Me is a sleek, portable and lightweight smart braille display. It is a competent device specially designed for Visually impaired students and professionals.

With its revolutionary Braille cell technology, Braille Me is highly compact and cost-effective. At Innovision, we understand the challenges faced daily by students and professionals, and keeping their recommendations in mind, we have built Braille Me.



*Image of Braille Me in isometric view*

Braille Me is a compact smart braille display with the following capabilities:

- A line of 20 braille cells with pins that arrange into the required pattern to accurately represent any six-dot braille code, in any language.
- Capable of reading the contents of files on an SD card for Stand-Alone mode.
- Remote connectivity to PCs and mobile devices for use with a screen reader
- Simple editing functions

It operates in 2 ways – Standalone reader mode and remote mode.

Standalone reader mode:

In this mode, Braille Me displays the content of files stored on an SD card. It does not do any translation or interpretation. You prepare the files ahead of time on your computer, then store them on SD card. For example, if you want to read in UEB, prepare the UEB transcribed title on your computer and then store it on the card. To facilitate this conversion, Innovision provides a simple software – Braille Me translator.

Remote mode:

You can connect the device to a computer/smartphone/tablet using either Bluetooth or USB. Once connected, you can navigate, read and edit the content present on the connected device through Braille Me seamlessly. You can also read books on your smartphone from Kindle, iBooks, Bookshare, etc.

## 1.1 Features of Braille Me

- Six - dot 20 braille cells with paper like feel
- 6 key Perkins keypad
- Removable battery lasting for 10 hours on continuous usage
- Upto 32 GB storage through captive SD card
- Support for 40+ languages
- Remote connectivity to PCs and Smartphones through Bluetooth and USB
- Notepad with several editing and navigation functions

## 1.2 Document conventions

For consistency and clarity, this documentation uses the following conventions.

Braille keys are indicated by number. For example, if the documentation reads Dot 1, then it means it implies the button corresponding to Dot 1. If multiple braille keys are required, the documentation indicates those keys by showing the numbers separated by a space like this: Dots 1 5.

When modifier keys are used, the documentation separates the modifiers from the rest of the keys with a plus (+) sign like this: Space + Dot 1. Recall that modifiers, like the Shift key on a regular QWERTY keyboard, are keys you hold down while pressing another key. This modifies the effect of the pressed key.

When any key combination is pressed, note that the command is executed only when all the keys are released, i.e., If a user presses space + dot 2 3 to execute a particular command then until all the keys - space, dot 2 and dot 3 are released the command will remain on the waiting list and as soon as they are released the command will be executed. On a braille keyboard, Space is often used as a modifier to alter the effect of the input keys.

In the descriptions of each Menu option, this documentation indicates the default setting. Messages, menu items or errors displayed on the braille display are denoted within quotation marks.

There are 2 types of messages in the software – notifications and errors denoted in the document using quotation marks.

Errors occur when there is a difference in the expected user input or any of the internal systems have failed.

Notifications are messages which are intended to inform of any changes to the system.

### 1.3 Inside the box

Braille Me comes with peripheral devices which are to be used along with Braille Me.

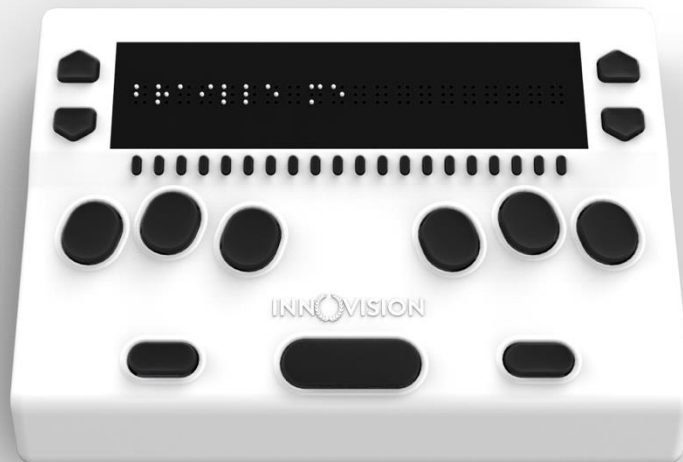
The box contains the following items:

- Braille Me
- Printed User guide
- Braille User guide
- Standard –A to Micro-B USB cable
- AC charger
- SD card pre inserted in your Braille Me

## 2. Orientation

Orientation to the positioning of buttons, keys, cells, and slots is essential for understanding how the device operates and how you input and receive information on the device.

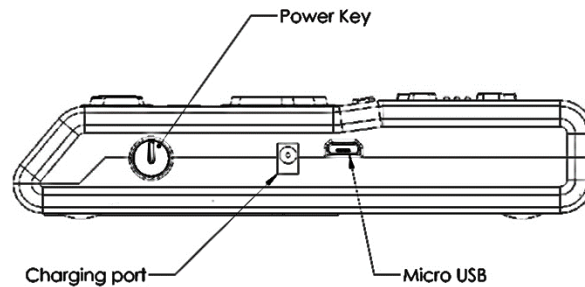
To begin exploration of Braille Me, place the device on a flat surface in front of you with the row of braille cells farther away from you and the sloping edge nearer to you. This is the proper operational orientation.



*Image of braille Me in top view*

Henceforth the guide will refer to this orientation to indicate the position of keys and slots.

On the right face of the device, you would find a circular button closest to you. This is a toggle button to power On/Off Braille Me. Going forward on the right face we will find two ports – A DC jack and a USB slot.



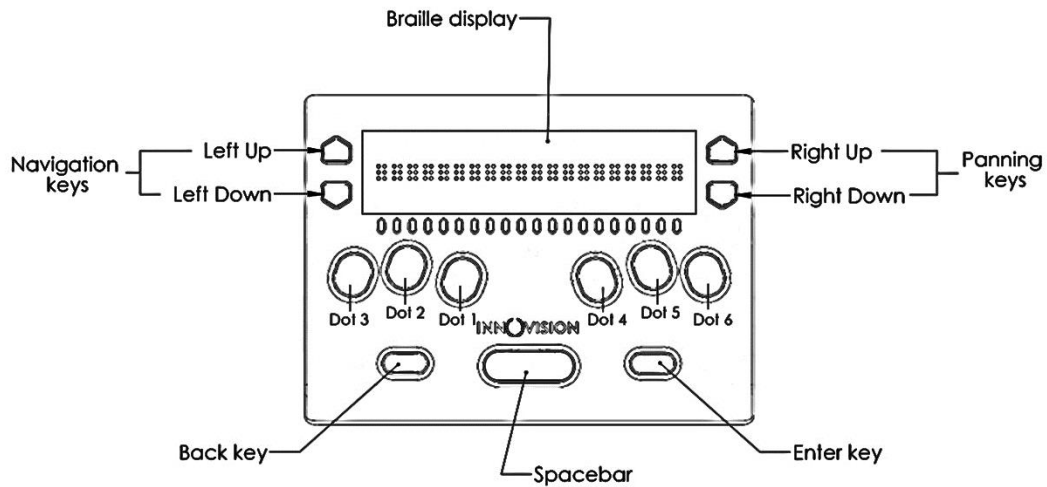
*Drawing of the right face of Braille Me*

The DC jack is used to insert the power cord from the charger and is positioned just beside the power button. The USB slot is farthest from you and is used to connect to PCs via a Standard-A to Micro-B USB cable.

Moving on to the top face, you will find a braille display of 20 cells farthest away from you. The texture of the braille display area is smoother compared to the body, and it will have many holes for braille pins. It is accompanied by 20 cursor routing buttons below each cell.

On both the sides of the braille display, we have a couple of keys used for navigation. On the right side we have the panning keys named RightUp and RightDown and on the left side the next item button named LeftDown and previous item button named LeftUp.

As we move towards the lower section from the braille display we have a Perkins style keypad which has 6 keys ergonomically arranged representing the six dots of braille. Dots 3 2 1 on the left and Dots 4 5 6 on the right. It is accompanied by a space bar which is located in the below these 6 keys in the middle.

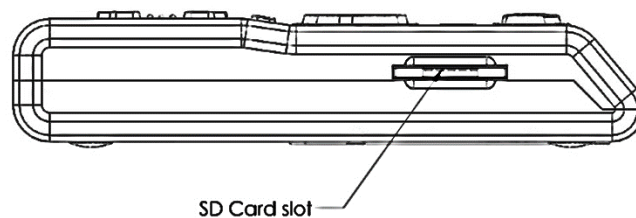


*Drawing of top face of braille Me*

On the right side of the space bar we have the enter key and on the left side back key.

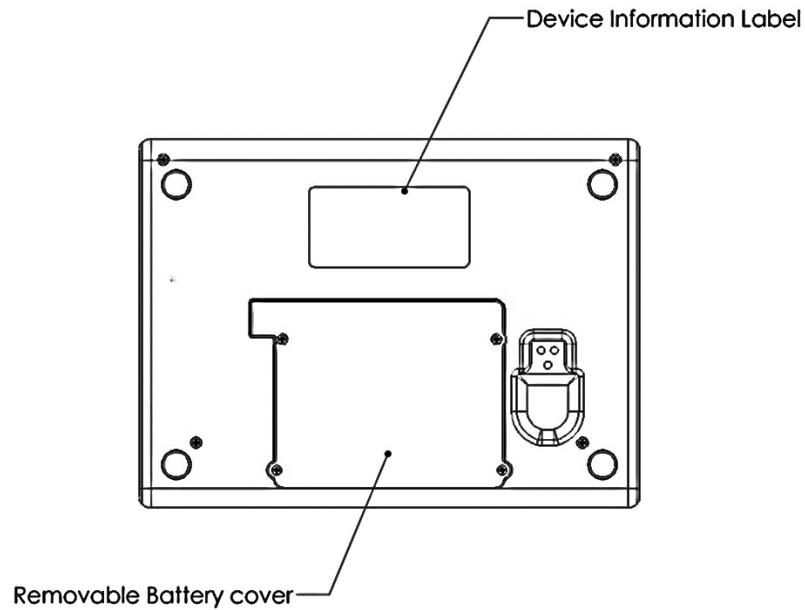
This concludes our top face. On the left face there is a slot for inserting an SD card. When you receive the device, it would already have a 4GB SD card inserted.

The SD card slot is a standard slot with spring feedback. The SD card is inserted with the card connector fingers facing upward. To release the card, press in and remove your finger to allow the card to pop out.



*Drawing of left face of Braille Me*

On the bottom of the device a battery compartment is present which is secured with a set of 4 screws.



*Drawing of bottom face of Braille Me*

Type of button or port	Function	Placing
<b>Display</b>	Braille dots	Upper most part on the top face
<b>Ports</b>	SD card slot	Left face
	Micro-USB slot	Right face
	DC jack	Right face
	Battery compartment	Bottom face
<b>Buttons</b>	Dot 1 to 6	Six keys in the middle of the top face Dot 1-2-3 on the left side and Dot 4-5-6 on the right side
	Space	Lower middle part of Top face
	Enter	Lower right part of the top face
	Back	Lower left part of the top face
	20 Routing keys	Placed below braille



		display on Top face
	2 Panning keys: RightUp and RightDown	On the Right side of braille display
	2 Navigation keys: LeftUp and LeftDown	On the Left side of the braille display
	Power button	Right face

### 3. Powering the device

This section explains how to charge and how to turn on & off the device. Refer to subsequent section for additional support. BrailleMe has two modes: a Stand-Alone mode and a Remote mode. In the Stand-Alone mode, the device is a book reader that uses an SD card as the reading media. In the Remote mode, the device works like other braille displays and needs to be connected to a computer/smartphone/tablet and a screen reader. This section explains how to charge, turn the device on and off, insert the SD card, and enter and exit the menus. Refer to the following sections for additional support.

#### 3.1. Powering On/Off

To turn on the device just press the power button for 1 sec and instantly the device will boot and you would hear an audio notification – a short beep. Along with this beep, the braille display will get activated, and all dots will toggle up and down. Post this toggling the braille display will show "menu." As soon as "menu" is displayed, you can start your work. This entire process should take less than four secs.

There are two ways of shutting down the device. One way is to long press the power button for three secs and the second is by using the shutdown menu item in the menu. While using the power button to turn off a double beep is given and in the case of shutdown menu item a long beep is given. After the beeps all the dots will move down.

#### 3.2. Charging

When you receive Braille Me, it may already have some charge; however, we recommend charging it fully before or during first use. You can use the device and charge it at the same time, so this does not hinder your reading time.

When the battery in the Braille Me gets to 15% and 7%, you will receive a notification indicating that battery is low. At 2% charge, the battery shuts down without notification. During shutting down Braille Me give a long beep, and all the braille dots will move down.

To charge the device, use the AC adapter provided. Insert the power cord into the AC adapter and the circular DC jack into the device. Make sure the AC plug is firmly held in the slot. If the device is powered on, you could check the charging status under battery level in the menu. Also, when in power ON state when the charging is complete a notification will appear indicating battery level full. If the charger is not right or damaged, the device will notify with the message "invalid charger". Please use only the charger supplied with the device. If the device is powered off, no charging indication will be displayed.

Please note USB charging is not supported and any attempts to do so might damage the device.

If you have charged the device for 1 or more hours, and it doesn't turn on, contact Customer Care at +91-8291406811 or [customercare@innovisiontech.co](mailto:customercare@innovisiontech.co).

## 4. Menu system

An informative yet straightforward menu system is implemented which will help you explore all the functions and settings. At a time only one menu item is displayed. To use the device, Braille Me has a set of universal commands which work throughout the menu system and in its different applications.

Action	Universal command
To go inside/ select a menu item	Enter key
To go 1 step back in the menu hierarchy	Back key
Navigate to the next/ previous menu item	LeftUp/ LeftDown
To Pan left to right	RightUp/ RightDown

Apart from the above-listed commands, you may also need to use the cursor routing functions to edit names and messages.

Before we go forward let's understand a few concepts:

### 4.1. Panning Keys

The Panning keys are keys found on the right side of the braille display. These keys control how you read the content in a single line of text. A line might have more than 20 letters hence all the letters cannot be to read at once on the 20 cell braille display. So, to read the contents of the line beyond the 20 characters; you will require moving back and forth using the panning keys. To read the subsequent 20 characters (panning

forward), press the downward pointing key also named rightDown. To read the prior 20 characters (panning backward), press the upward pointing key also named rightUp.

## **4.2. Edit box**

Braille Me presents a text dialog/ Input field called an Edit Box when you trigger functions like find the keyword, rename a file, pair a new Bluetooth device etc.

Whenever an edit box appears, it will show a message asking you "enter the name/keyword." Do not press back, this message is temporary and will vanish when you start typing. Enter the text using the braille dot keys. Once you are done typing, press the enter key to proceed forward. The Edit Box permits only 40 characters of text as input.

## **4.3. Cursor**

Whenever you are editing content in Braille Me, by default a cursor will be displayed. The cursor marks the position where the editing takes place. So, when the cursor is on a character and if you type a new character, the cursor with the old character both will shift by 1 cell to make space for the new character. If you execute backspace then the character prior to the cursor will be removed. In case you execute the delete command then the character with the cursor will be deleted.

In order to show the cursor on a six-dot system we offer two different ways:

### **4.3.1. Mode 1**

In this mode, the cursor is shown by blinking dots which are not part of the braille character. For example, on the braille display the text "welcome brailist" is displayed. The cursor is positioned on 'b' so the dots 1 and 2 will remain steady and in up position since they make up the letter b, while the dots 3,4,5 and 6 will toggle up and down indicating the cursor. So at a time the braille cell will contain both the information of the character and the cursor. This method is the default method.

### **4.3.2. Mode 2**

Another way to display the cursor is to show the cursor only when triggered by the user. In this mode, when the user presses the combination – LeftUp + LeftDown the braille display will remove all the characters and only show the cell with the cursor by raising all six dots. Here, all keys except the cursor routing keys and the Back key are frozen. Upon pressing the same combination again, it will bring back all the characters and all keys will become functional. So the combination LeftUp + LeftDown will toggle between the text and the cursor.

The cursor blinking mode (mode 1) can be switched on/off by pressing the combination rightUp + rightDown.

Irrespective of the cursor blinking mode turned on or off, you can use the leftUp + leftDown combination to check the cursor in the mode two formats.

Both the cursor modes work in the editor, edit boxes and also with the screen reader.

To move the cursor from one position to another you can use the cursor routing buttons. Let say the cursor is on the 10th braille cell and you want to move it to the 2nd braille cell. Then you would have to simply press the cursor routing buttons below the 2nd braille cell, and the cursor will route to the same.

#### **4.4. Word wrap**

This is a very useful setting in editor. It automatically moves a word that is too long to fit in 20 cells to the beginning of the next line. This makes sure that words are not broken at the edge of the 20 cells. This feature is found under configuration.

## **5. File manager**

This is an application which manages the files on the SD card facilitating browsing, reading and editing the files. To enter the menu item – “file manager,” press the enter key. This should take you to its sub menu items –

### **5.1. Browse**

This is the first item inside File manager. This function allows you to scroll through all the files inside the SD card. The submenu items under browse are open/ rename/ delete which are described in section 5.3.

#### **5.1.1. Supported Files**

Note, files stored in the root folder of the SD card are only visible. All other folders are hidden. Braille Me has certain criteria for files they are as follows. It supports mainly two formats – BRF and TXT, all other file types are masked and not shown in the browse list. Also, take care that files with filenames more than 40 characters or characters in lowercase will not be shown.

When you would try to open a file and if its size exceeds – 40kB then the device will give an error “file size exceeds” and if the encoding is not ASCII (ANSI), then braille Me will show an error “file not supported”.

The list of permissible files is numbered but unsorted and shown one at a time. If the file format is TXT then a dot pattern of all 6 dots is preceded to the file name. And if it is BRF then a dot pattern of dot 1, 2, 3 is preceded.

If the SD card is empty or does not have any files than an error message will be displayed – File not found. Also, If the SD card format is not FATfs then it will show “sd card not found”.

### **5.2. Search**

This is the second item on the list. This function allows you to search supported files as defined in 5.1.1 by keywords. As you enter "search", Braille Me will show you an edit box asking you "enter file name". Enter the first few characters of the file name and press enter key. A list of files will appear which is numbered but unsorted. The keyword inserted can be either complete matches or can be the initials of the file name. For example. If I search with the keyword "harry" then among the files "harry potter", "the harry potter", "harry's" and "harry", only "harry potter", "harry's" and "harry" will be enlisted.

Also, when you enter the keyword please enter in lowercase only. If in any circumstance, there is no match found an error will show up – "file not found".

### **5.3. Open, Rename and Delete**

Both Search and Browse provide you with a list of files. To open any of the files press enter when the file name is displayed on the braille display. This will take you to 3 options – open, rename and delete.

When you enter the "open" option, it will take you to the editor which is covered in the next section. Before the editor, Braille Me can through errors in cases where the file is not appropriate like file size more than 40kB or encoding is not ASCII or file is corrupt. Refer to section 5.1.1 for details on supported files.

Files with BRF format cannot be edited and will be shown as it is on the braille display. Word wrapping, typing and cursor routing functions are automatically turned off while reading BRF files. You can still use the navigation commands and auto-scroll feature to read quickly. TXT files, on the other hand, will be editable and support many functions like auto-scrolling, word wrap, navigation shortcuts, etc.

You can also rename a file. Here, upon selecting this option, an edit box will open asking you to enter a file name. If successful, it will give a notification – "file rename successful". Press back key and now you are on the file list with the renamed file shown on the braille display.

Note, in the search list suppose you searched for file "harry" and then selected the enlisted file to rename and then renamed it to "tony" then after renaming is successful it will be removed from the search list.

Another option is "delete". This allows you to permanently remove the file from the SD card. It will show a message – "delete successful" if the file was removed. After deleting when you go back to the file list, it will show the next file.

### **5.4. New File**

You can use this function to create txt files. When you enter this menu item, it will ask you "enter file name" which is actually an edit box. After entering the filename, you will

be directed to the editor. Note, the filename is restricted to 40 characters. In the editor, you will be shown a message – “Start typing.” After that you can start taking your notes.

### 5.5. Editor

This is one of the most important aspects of Braille Me. It is a simple and easy to use notepad application which allows you to navigate, read documents and also edit them. Whenever you open a file using the Search list or browse list or create a new file, you will be directed to the editor.

As soon as you enter the editor if it's a new file you will be shown a message – “start typing” else you will be shown the contents of the file.

The editor opens BRF and TXT files. As mentioned earlier BRF files are read-only files. So, typing and cursor routing is disabled. All navigation commands will be active. BRF files are shown with their formatting as it is. Only form feed and blank lines are removed to ease reading.

In case of TXT files, all editor commands and functions are active. If you only want to read the document, you can freeze the typing keys, ensuring unwanted characters are not entered while reading. By default, typing will be on, to toggle press space + back + enter. While toggling, Braille Me will show a message – “typing on/off,” use the back key to go back to the file.

While typing, a paragraph is shown by a specific symbol where two adjoining cells with six dots each are in up position. To insert a paragraph, use the enter key. Note, when you insert a paragraph, the symbol for paragraph is only inserted and your subsequent characters will continue on the same line. However, when you see this on your desktop, it will show as a normal paragraph with the subsequent characters starting in a new line.

Inside the editor there are several options and shortcut keys as given in the table below:

Action	Command
<b>Backspace</b>	Space + Back
<b>Delete</b>	Space + Enter
<b>Previous paragraph</b>	Space + dot 1 + leftUp
<b>Next paragraph</b>	Space + dot 1 + leftDown
<b>Start of File</b>	Space + Enter + dot 1 3
<b>End of File</b>	Space + Enter + dot 1 6
<b>Keyword search</b>	Space + dot 1
<b>Cursor blinking on/off</b>	Space + dot 1 4

<b>Cursor mode 2 toggle</b>	leftUp + leftDown
<b>Toggle typing on/off</b>	Space + Back +Enter
<b>Auto Scroll</b>	Space + dot 2
<b>Save</b>	Space + dot 3
<b>Exit editor</b>	Back key
<b>Save/ close: yes or no</b>	back + dot 3 for yes and enter + dot 6 for no

For basic navigation inside the file, you can use either pan keys or next/ previous keys. Apart from them to move through paragraphs, you can use Space + dot 1 + leftUp/ leftDown

To go to the top of the file or bottom of the file press Space + Enter + dot 1 3 for start of file and Space + Enter + dot 1 6 for the end of file. In cases where the files are large navigation by keyword search would be the best option.

Whenever you want to search a keyword, simply press its shortcut command - Space + dot 1. This will open an edit box asking you – “enter the keyword”. Type out the initials of the keyword or the entire keyword. Note, the entered keyword must contain more than one character. Upon pressing enter, an enumerated list of sentences with the keyword will be displayed. The list will have all the sentences from top to bottom of the file even if you are currently positioned in the middle. And the first sentence with the keyword in the file will be numbered 1. However, when the list comes up, it will first show the sentence with the keyword just after your current position with its number. To go to the previous sentence, use the leftUp key which is for the previous item and leftDown to go to the next sentence. Each sentence that appears in the list will have a total of 40 characters so you can use the pan keys to read it completely. To go to any of the listed sentences press the enter key.

Braille Me also offers an automatic scrolling feature – Autoscroll which can be activated by pressing Space + dot 2. On pressing space + dot 2 “auto scroll on” message will pop up. Now press the back button to exit notification. Also when you again press the same key then “auto scroll off” message will be displayed. Auto scroll time can be modified from the configuration settings. User can vary the auto-scroll time from 1sec to 9 sec. Once activated. The braille display will pan after a set time period going forward. During this time, all other keys except the back key will be frozen. You can deactivate it by again pressing Space + dot 2. If you reach the end of the file, then it will automatically go to the top of file and continue.

To save documents, you can press Space + dot 3 while in the editor it will give you a notification “File Saved”. If you have made any changes in the file and then pressed the back key for exit, then Braille Me will prompt you with the message “Save: yes: no”.

You can either input yes by pressing Back key + dot 3 and no by pressing Enter key + dot 6. You could also press the back key to remain in the file. On selecting yes, your file will be saved and closed. If You select No, then the file will be closed without saving your edited content. If the File is not modified, then by pressing back button for exit it will prompt "Close: Yes: No."

Whenever you exit a file, the last position is stored and bookmarked. So, whenever you open that file again, it starts from where you had left. This reduces a lot of hassle while reading long documents over a period. Note, Bookmark for the last 20 files are only stored.

### **5.6. Preparing files for Braille Me**

Braille Me as mentioned earlier does not do any translation or interpretation inside the device, so files need to be prepared beforehand. For this purpose, we have built a software which is simple to use and does not need any installation. Open the application – Braille Me translator. This application converts any TXT file stored in UTF8 format into a Braille Me readable TXT file and vice versa. The first option is Interface language; this is the language for displaying the menu of the Braille Me translator software. It has a drop-down menu listing all available languages.

Next is conversion type. This has two options forward conversion and backward conversion. Forward conversion means converting a desktop readable TXT file to Braille Me readable TXT file. If you want to read documents which are currently on your PC, use this option to convert and transfer it to Braille Me. The backward conversion option is used to convert documents that you have edited or created in braille Me into PC readable version.

Then we have a button to select the file to be converted. Select the file of interest using the file explorer. Make sure the selected TXT file is stored in UTF8 format.

Then we have a drop-down menu with the title, data conversion table. Here you select the language and grade to be used for converting the contents of the file. Make sure the language and grade are appropriately selected, if not then all characters that are not found in the selected language will be shown by spaces.

After the language selection, there is a button to select the output folder. It can be any folder on your computer or the Braille Me SD card directory.

After that, again there is a drop-down menu to select the language and grade for the filename. Please note, the name of the file can be in a different language than the contents of the file.

The last option is to select between creating a BRF file or a TXT file. This option is only available during forward conversion. Press Convert button after filling out all the details.

There can be cases where the file format is wrong, or the file path is faulty, or the contents of the file do not match the conversion language selected, in all of these cases and several others the software will give an error.



When the conversion is successful, a dialog box with message – successful conversion will appear. The new files created are encoded in ASCII(ANSI). Please do not edit any of these files. Also, the names of the files will appear in latin characters in uppercase and would not be meaningful when read on a computer. But, these files when inserted in your braille Me will give you the correct braille representation.

Please note the Braille Me translator might convert certain characters incorrectly especially in grade 2 braille since it is under development.

Let's take an example: An English student wants to edit his assignment for a foreign language – Spanish provided by his teacher by inserting his answers into the same document and giving it back to his teacher.

Let's have a look at the process: The student opens the braille Me translator, then select his language for the interface as English. He selects forward conversion in the menu – conversion type. After that, he selects the file of interest named – “assignment” in the Input file menu item.

He selects the language and grade as Spanish with grade 1 in the data conversion table option. He also selects the output path as the SD card directory.

He then selects the filename conversion table as UEB English since the name of the file is “assignment” which is in English.

He then chooses to convert to TXT option and clicks convert. As soon as the convert button is clicked the software shows a dialog box with file conversion successful message.

Now he opens the file in Braille Me using the file manager. He edits the contents and again goes for conversion.

This time all the language settings will remain the same, but the conversion type is changed to backward conversion. Also, the input file has changed to the edited file, and the output folder has changed to the documents folder on his PC.

He presses the button convert, and the file is ready to be submitted to the teacher

## **6. Bluetooth**

This function allows you to connect Braille Me to iOS and Android smartphones. A total of 4 devices can be paired, and you can connect to 1 device at a time. The process of connecting with smartphones is mainly broken into two parts- Pairing process and connecting process. To start using Braille Me with an Android or iOS device, you will need to first pair them.

### **6.1. Pair new device**

As soon as you enter the Bluetooth menu item, the Bluetooth will turn on, but it is not yet visible to other devices for pairing. The first option in the Bluetooth menu is "pair a new device." As you enter this menu item Braille Me will show a message – "waiting for pair request". At this point, Braille Me would be visible to other Bluetooth devices. If you had paired four devices earlier, then it will show an error "pair list full" and will not allow you to proceed further. In this case, you need to delete any one of the paired devices before proceeding.

Now on your smartphone, navigate to Bluetooth settings, turn it on and now you will find Braille Me listed under the available device. Initiate pairing from the smartphone, and you will hear a sound once pairing is completed on the smartphone. Your smartphone might ask to confirm the pairing, please go ahead and press OK. Note, that the pairing time is limited, once initiating the process, you need to complete it within 10-15 secs.

Wait for a few secs until Braille Me changes its message from "waiting for pair request" to an edit box asking "Enter paired device name." Enter a short name which you can use to identify your smartphone. Braille Me allows you to store four devices with distinct names. This naming is required to identify devices in a situation when more than one device has Bluetooth on.

Note, until you do not receive a notification on Braille Me saying – "Paired to device name," the pairing process is not complete. If your smartphone is showing Braille Me under the paired list but Braille Me is not showing the message - "Paired to device name," even after 5-10 sec then you need to remove Braille Me from the smartphone pair list and redo the pairing process.

To remove any device from the pair list, select the delete paired device option in the Bluetooth menu.

## **6.2. Connecting to a smartphone**

After the pairing process is completed, you can connect to your smartphone and start your work. To do so, navigate to the Bluetooth menu in Braille Me. After "Pair new device" there will be several options to connect to BrailleBack, Braille Me app or Voice Over. Select as per your requirement. Upon selecting any one of them, a list of all paired devices will be displayed. Select the one you want to connect to and press enter. Now, Braille Me will show a message – Waiting for connection. At this point Braille Me is ready to be connected to your specified device.

Now, on your smartphone, switch on Brailleback for Android or enable VoiceOver on iOS. In just a couple of secs Braille Me should get connected with text from the smartphone being displayed in Braille Me. If they do not get connected, then try to lock and unlock the smartphone. Note, you also need talkback turned on while trying to connect.

If the device goes off connection due to some reason, then a "connection lost" message will be displayed. This happens due to the smartphone turning off or going into

sleep mode or simply going out of Bluetooth range. In case your smartphone comes back in Bluetooth range then the connection is again established automatically.

To exit the remote mode simply press back key and it asks you to confirm. Press yes by the key combination – Back + dot 3.

### **6.3. Using with BrailleBack**

Once connected with BrailleBack, you can navigate the entire smartphone using the Braille Me keypad. Also, you can type using the six-key keypad provided in Braille Me.

To input text with your braille keyboard, first, enable the keyboard in your Android settings under Language and Input. If you try to use the keyboard before completing this step, you receive a prompt to change your settings.

To edit a text field, focus and activate the text field. You can then use the Up and Down Arrow keys to move in the text field. When editing text, BrailleBack switches to eight-dot braille known as Computer Braille. Currently, BrailleBack does not support any other braille as input.

By default, Android is set to display English Computer Braille.

Change the language in BrailleBack to display 6-dot braille, follow the steps below:

Go to open the Home screen.

Navigate and select Apps>Settings>Accessibility>BrailleBack>Settings.

Navigate through this screen of items to "Braille type" and select.

Android generates a dialog screen which indicates the type of braille being displayed and provides two choices: Literary braille or Computer Braille.

Computer Braille is checked by default. Select "Literary braille" by checking this item.

When you check "Literary braille," you are returned to the BrailleBack Settings screen.

Navigate to the "Literary braille table" and select. Another dialog screen opens with a selection of output translation tables.

Select your preferred language and grade. After that, you are returned to the BrailleBack Settings screen.

Refer to the BrailleBack commands in section 11.2. While in BrailleBack, you can turn on/off typing and also use the two cursor modes with the commands mentioned in the table.

### **6.4. Using with VoiceOver**

Under development

### **6.5. Using with Braille Me app**

This tool would be beneficial when a sighted teacher is teaching a Braille student since the teacher can see on the smartphone screen all the activity done by the student in Braille Me.

This is a simple app which displays the contents of the braille display on the connected smartphone. To activate, you need to have the braille Me app installed on an Android smartphone. The connection procedure is different from that of BrailleBack, instead of switching on brailleBack, you need to turn on Braille Me app.

Open the braille me app. On the right side in the app, tap on the Bluetooth icon to show you the list of paired devices. Select any of the paired device and once the connection is successful a message - "Connected" will be shown on the smartphone screen and also on the device. Now, when you press the back button, Braille Me will automatically change the "connect to Braille Me app" to "disconnect from Braille Me app".

Once connected, you can press the back key and go on navigating the Braille Me menu system. Unlike BrailleBack or VoiceOver, upon pressing back key on Braille Me, the connection is not lost. So, whatever you see on the braille display like file manager, file list, the content of files, etc. will also be shown on the smartphone.

## **7. USB**

Braille Me allows you to connect to your Mac computer or Windows computer over USB. With Braille Me, a standard micro-USB cable has been provided. Insert the small end of the cable in Braille Me and the larger end into your computer's USB slot.

Under this menu, if you try to select any option without inserting the USB cable it will give an error "USB not inserted."

### **7.1 Connecting with NVDA**

To connect with NVDA, you would require adding our braille display driver. Please see appendix for installation instructions.

On Braille Me navigate to the USB menu and under it – connect to NVDA. This will show a message – "waiting for connection." Now your braille Me is set to get connected to NVDA.

Switch on NVDA on the computer, go to braille settings and under braille display select Braille Me. Also, select the Output table as your preferred language and grade. If a six-dot table is present for your language, prefer it over other tables since it will perfectly match with Braille Me. As soon as you press OK, you will be connected to NVDA.

To exit simply press back key and Braille Me will ask you to confirm closing the connection. Press the shortcut key Back + dot 3 for Yes to exit. All the commands for navigation and editing are listed in the section – 11.3 NVDA commands.

## **7.2 Connecting with VoiceOver**

This functionality is still under development. To connect to VoiceOver, you do not require any driver installation. Simply navigate to the USB menu on Braille Me and select – connect to VoiceOver. If VoiceOver is already turned on, then it will immediately connect, if not then it will show a message – “waiting for connection.” This feature is currently under development and will be updated soon.

## **7.3 Connecting with JAWS**

Under development

## **7.4 Connecting as mass storage**

Braille Me also provides a utility to transfer files from the inserted SD card to a computer through a USB cable. It shows up as a mass storage device like a pen drive on the computer. This utility is present under the USB menu in Braille Me. To activate, connect the USB cable to the computer and enter this utility. Within 10-15 secs Braille Me will show up on your computer as a mass storage device. Meanwhile, Braille Me will show a message – “connected as media device.” If the SD card is not inserted in Braille Me then it will give an error – “sd card not found.”

# **8. Configuration**

This menu item lists all the settings available on the device. Foremost is the language setting.

## **8.1 Language setting**

The default setting for language is BANA English Braille grade 1. The device supports around 40+ languages. At a time, the device can store language files for five languages. You can switch between them using the set language utility. Here you will find a list of all the five languages in grade 1 and grade 2. The names of the language are written in their braille translation, i.e., BANA English will be written in BANA braille, whereas grade 2 UEB will be displayed in UEB braille with grade 2. If the language is changed, then it will change the entire menu system, notifications, errors, etc. to that language.

## **8.2 Factory reset**

This utility is used to remove all bookmarks and Bluetooth paired devices. It also resets time for auto scroll and resets the language to the default language which is BANA English Braille grade 1.

### **8.3 Date and time**

Braille Me also maintains date and time, which can be set in the configuration menu. The format for time is: (HH: MM AM/PM), and for Date, it is: (DD: MM: YYYY abbreviation for the day). You can check the time by using a shortcut – LeftUp + RightUp and date by pressing LeftDown + RightDown. Date and time are not reset through the factory reset option. To edit the time and hours use the panning keys positioned on the right side of the display.

### **8.4 Braille Test**

This utility is made for testing the braille dots. When you enter it, all braille dots will toggle up and down. Here you should check if any dots are stuck and either is not coming up or going down. If there is any discrepancy, then it is certain that the braille displays needs cleaning, and please contact customer care in this regard.

### **8.5 Software version**

It shows the current version of the software in Braille Me. You can check if you have the most updated version by comparing your current software number with that on the website. This version number would also be required while contacting customer care.

### **8.6 Auto scroll time**

Auto scroll is a feature which continuously refreshes the braille display after a specific time and keeps showing the next 20 characters. Here you can set the time after which it refreshes. It can vary from 1 to 9 sec. To change the time, use the panning keys.

## **9. Battery level**

In this utility, you can check the amount of charge in the battery and also the status of charging. The battery level is a graphical representation with each cell representing 10% charge. So, if the battery is 45% charged then all dots from the 1st to the 4th cell are embossed and also the 5th cell with the dots 1 2 3 embossed. After the 10 cells of battery level, you will also find a message indicating if the charger is connected or not.

You can also see this battery level by simply pressing all navigation and panning keys leftUp + LeftDown + rightUp + rightDown from anywhere in the device. If the battery level drops to 15% or 7%, a notification will pop up informing you the battery level and

an audio indicator with three beeps. And after 2%, the device will shut itself down after giving a long beep alert.

Braille Me is designed to charge within 1-2 hours using the charger provided. In case it does not charge in the stipulated time, it can be because the charger has been damaged or the cable is loose. If the charger has been damaged or you have inserted a different charger, then braille Me will show a message "charger not supported."

## 10. System Shutdown

To shut down the device there are two modes of action. One way is to long (3 secs) press the power button and the second is the system shutdown option. While using the power button to shutdown, an audible indicator with double beep is given, and in case of using the system shutdown option, a single long beep is given. After shutting down all pins will move down.

## 11. List of all commands

### 11.1. Global commands for Braille Me

Braille-Me Functions	Key command
<b>PAN left</b>	leftup
<b>PAN right</b>	leftdown
<b>Next</b>	rightdown
<b>Previous</b>	rightup
<b>Back command</b>	back
<b>Enter command</b>	enter
<b>Space command</b>	space
<b>Keyword Search toggle</b>	Space + dot 1
<b>Auto-Scroll toggle</b>	Space + dot 2
<b>Save file contents</b>	Space + dot 3

<b>Backspace</b>	Space + back
<b>Delete</b>	Space + enter
<b>Previous paragraph of file</b>	Space + dot 1 + leftup
<b>Next paragraph of file</b>	Space + dot 1 + leftdown
<b>Go to start of File</b>	Space + dot 1 3 + enter
<b>Go to end of File</b>	Space + dot 1 6 + enter
<b>Yes</b>	Back + dot 3
<b>No</b>	Enter + dot 6
<b>Display time toggle</b>	leftup + rightup
<b>Display date toggle</b>	leftdown + rightdown
<b>Display battery level toggle</b>	leftup + leftdown + rightup + rightdown
<b>Cursor blink ON/OFF</b>	rightup + rightdown
<b>Cursor mode 2 toggle</b>	leftup + leftdown

## 11.2. Braille Back commands

<b>Braille Back function</b>	<b>Key Command</b>
<b>home</b>	Space + dot 3 + enter
<b>back</b>	Space + dot 1 2 3 4 5 6
<b>go up one line</b>	leftup
<b>go down one line</b>	leftdown
<b>pan right</b>	rightdown
<b>pan left</b>	rightup
<b>recent apps</b>	Space + dot 2 5
<b>notification bar</b>	Space + dot 5 + leftup
<b>backspace</b>	Space + enter
<b>enter</b>	enter



<b>space</b>	space
<b>go left to non-blank window</b>	Space + dot 1+ righup
<b>go right to non-blank window</b>	Space + dot 1+ righdown
<b>go up to line with different content</b>	Space + dot 1 3 + enter
<b>go down to line with different content</b>	Space + dot 1 6 + enter
<b>go up to line with different attributes</b>	Space + righup
<b>go down to line with different attributes</b>	Space + righdown
<b>previous paragraph</b>	Space + dot 1 + leftup
<b>next paragraph</b>	Space + dot1 + leftdown
<b>go to top left corner</b>	Space + dot 2 3 + enter
<b>go to bottom left corner</b>	Space + dot 2 6 + enter
<b>go up several lines</b>	Space + leftup
<b>go down several lines</b>	Space + leftdown
<b>page up</b>	Space + dot3
<b>page down</b>	Space + dot6
<b>delete</b>	Space + enter

### 11.3. NVDA commands

<b>NVDA function</b>	<b>Key Commands</b>
<b>space</b>	Space
<b>backspace</b>	Space + back
<b>enter</b>	Enter
<b>escape</b>	Space + dot 1 2 3 4 5 6
<b>delete</b>	Space + enter
<b>Braille previous line</b>	Leftup

<b>Braille next line</b>	leftdown
<b>Braille scroll back</b>	Rightup
<b>Braille scroll forward</b>	rightdown
<b>Left Alt</b>	Space + dot2
<b>tab</b>	Space + dot 5
<b>Shift + alt + tab</b>	Space + dot 2 4 5
<b>Alt + tab</b>	Space + dot 2 5
<b>Shift + tab</b>	Space + dot 4 5
<b>end</b>	Space + dot 6 + enter
<b>Control + end</b>	Space + dot 1 6 + enter
<b>home</b>	Space + dot 3 + enter
<b>Control + home</b>	Space + dot 1 3 + enter
<b>Left Arrow</b>	Space + rightup
<b>Control + shift + left Arrow</b>	Space + dot 1 4 + rightup
<b>Control + left Arrow</b>	Space + dot 1 + rightup
<b>Shift + alt + left Arrow</b>	Space + dot 2 4 + rightup
<b>Alt + left Arrow</b>	Space + dot 2 + rightup
<b>Right Arrow</b>	Space + rightdown
<b>Control + shift + right Arrow</b>	Space + dot 1 4 + rightdown
<b>Control + right Arrow</b>	Space + dot 1 + rightdown
<b>Shift + alt + right Arrow</b>	Space + dot 2 4 + rightdown
<b>Alt + right Arrow</b>	Space + dot 2 + rightdown
<b>Page Up</b>	Space + dot 3
<b>Control + page Up</b>	Space + dot 1 3
<b>Up Arrow</b>	Space + leftup

<b>Control + shift + up Arrow</b>	Space + dot 1 4 + leftup
<b>Control + up Arrow</b>	Space + dot 1 + leftup
<b>Shift + alt + up Arrow</b>	Space + dot 2 4 + leftup
<b>Alt + up Arrow</b>	Space + dot 2 + leftup
<b>Shift + up Arrow</b>	Space + dot 4 + leftup
<b>Page Down</b>	Space + dot 6
<b>Control + page Down</b>	Space + dot 1 6
<b>Down Arrow</b>	Space + leftdown
<b>Control + shift + down Arrow</b>	Space + dot 1 4 + leftdown
<b>Control + down Arrow</b>	Space + dot 1 + leftdown
<b>Shift + alt + down Arrow</b>	Space + dot 2 4 + leftdown
<b>Alt + down Arrow</b>	Space + dot 2 + leftdown
<b>Shift + down Arrow</b>	Space + dot 4 + leftdown
<b>Caps Lock</b>	Back + enter

## 12. List of system notifications and errors

<b>Message</b>	<b>Description</b>
<b>sd card full</b>	It appears while saving a file when there is insufficient space in the SD card
<b>file open error</b>	it appears if Braille Me fails to open a file
<b>connection lost</b>	While connected over Bluetooth: It shows up if the smartphone goes to sleep or is turned off or goes out of Bluetooth range. While connected over USB: It shows up if the screen reader has been turned off or the USB cable is loose hence disrupting communication.

<b>file delete error</b>	it appears while deleting a file but fails to delete it due to some hardware issue with SD card. Try to execute the command a couple of times and it should be resolved.
<b>language set error</b>	If the device fails to set a new language this error will appear. It is possibly due to faulty firmware.
<b>usb not inserted</b>	When the user tries to perform USB related operations without plugging USB in both devices i.e., the computer and Braille Me
<b>sd card not found</b>	If the device fails to find an SD card. This may be due to wrongly inserted SD card or the format of SD card is not FATfs
<b>file not found</b>	When the device does not find any permissible files inside the SD card. If you are certain the SD card has legit files, try to insert the SD card again.
<b>connection failed</b>	While trying to connect via Bluetooth, if the selected device for connection does not respond then it shows this error.
<b>not valid filename</b>	if the device fails to create a new file due to faulty input name e.g, all spaces.
<b>file not supported</b>	If the file format is not ANSI (ASCII)
<b>file is empty</b>	if user tries to open an empty BRF file
<b>keyword not found</b>	if no match for the keyword is found during keyword search
<b>file size exceeds</b>	if edited file size exceeds the 40KB file size limit
<b>file already exists</b>	if the user tries to create a new file or rename existing file with the filename that already exist in the SD card
<b>pairing failed</b>	While pairing with a new device if the user fails to respond from the smartphone within approx 20 secs or tries to connect with the screen reader instead of pairing.
<b>delete device failed</b>	if Braille Me failed to remove the entry of the paired device due to communication issues with the Bluetooth radio. Try executing the delete command again.
<b>paired device name exists</b>	It appears when the user gives the newly paired device a name which is already in use.

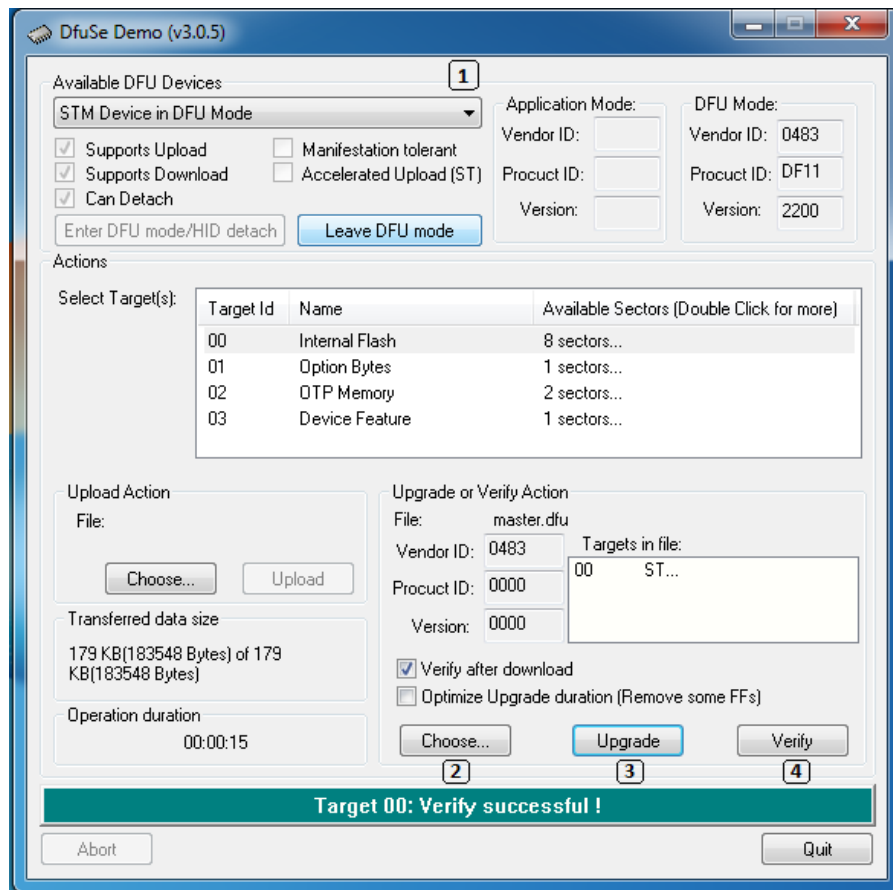
<b>no paired device found</b>	when the paired device list is empty
<b>device restarted</b>	When the device hangs up due to an internal issue, it will stop responding to key presses and reset after 10 secs. While restarting it will give this message.
<b>pair list full</b>	if the user has already paired 4 smartphones to Braille Me and tries to pair another new device then this error is shown
<b>bluetooth not responding</b>	If Braille Me's Bluetooth radio has failed to respond or damaged, then this error is shown. Please contact customer care if this error arises.
<b>charging</b>	It means the charger is connected to device and the battery is charging
<b>battery low plug charger</b>	This notification pops up when the Battery level is below 15%
<b>battery full unplug charger</b>	If the charger is connected and the battery reaches 100% then this message is shown
<b>standby mode</b>	It means the device has gone into sleep mode since it is not operated for more than 5 minutes
<b>charger not supported</b>	This occurs either when the wrong charger is plugged or the charger provided has been damaged.
<b>invalid time</b>	It occurs when the inserted hours figure exceeds 12 hours or minutes figure exceeds 60 minutes
<b>invalid date</b>	It occurs when the date exceeds the maximum possible values for day, month and year
<b>key pressed</b>	If any of the keys are stuck or electrically shorted this error pops up indicating which key has been stuck.
<b>Restarting device</b>	When factory reset is executed

### 13. Firmware upgrade

The device's firmware can be upgraded with the help of a windows computer. Please follow the following process:

- Run the "DfuSe demonstration" application (Start -> All Programs -> STMicroelectronics -> DfuSe -> DfuSe Demonstration).
- Turn off Braille Me.
- Open the battery cover.

- Connect the device to PC via USB cable.
- Press the Firmware load button.
- While Firmware load button is pressed turn on the device.
- If device connects successfully the item "STM Device in DFU Mode" will show in menu.
- Click the "Choose" button to select a DFU file.
- Check the "Verify after download" checkbox if you want to launch the verification process after downloading data.
- Click the "Upgrade" button to start upgrading file content to Braille Me's memory.
- Click the "Verify" button to verify if the data was Successfully uploaded.



Snapshot of the DfuSe software

## 14. Battery replacement

The battery provided is a li-polymer battery which is a common type found in majority of electronic equipment. The battery is connected to the mother board by a 2-pin connector. To replace, execute following steps:

- Switch off the device and open the battery lid situated on the back of the device.
- Remove the 4 screws on the edges of battery lid.
- Remove the battery and unplug the connector.

- Insert the new battery and plug in the connector. The connector is designed to connect only one way and easily slides in so do not force insert the connector.



*Images of the 4 steps of battery replacement*

## 15. Specifications

Specification	Braille Me
<b>Braille Display</b>	Six-dot 20 Braille cells with cursor routing keys
<b>Keyboard Type</b>	6 key Perkins-style
<b>Ports</b>	Micro USB, SD card slot, DC jack
<b>Interface</b>	USB v2.0, Bluetooth smart v4.2, SD card upto 32GB
<b>Language</b>	Supports 50+ languages, Capacity to hold 5 languages per device
<b>Supported File Formats</b>	.TXT, .BRF

<b>Screen readers</b>	Android: BrailleBack 0.95.1 + iOS 11+: Voiceover MacOS High Sierra+: Voiceover Windows 7+ : NVDA 2017.2+
<b>Battery</b>	12 hours, 1.5 hours to charge(AC adapter)
<b>Electrical parameters</b>	Charging: 19V/1A Charger AC socket: AC 100-240V, 50-60Hz, 1.0A
<b>Size &amp; Weight</b>	18.8 cm x 13.8 cm x 2.9 cm (W x D x H), 580g
<b>Certification</b>	CE certified FCC and IC under process FCC ID: A8TBM78ABCDEFGH IC ID: 12246A-BM78SPPS5M2
<b>Warranty</b>	One-year limited parts and labor warranty

## 16. Installing NVDA Add-on and driver

- Execute the NVDA screen reader
- On Braille Me Navigate to Menu -> USB Connection -> Connect to NVDA. Press enter key and Braille me should respond with the message "waiting for connection".
- If your Windows OS version is Windows 7 then you need to first install the Braille Me driver which is an executable file with the name "BrailleMeUsbDriver-64bit.exe". If it is Windows 8 or 10 then you do not require to install the driver.
- You can check whether the driver is properly installed by going to device manager and checking if Braille Me is listed under USB peripherals. Note, if the Braille Me is not connected via USB and you have not entered the Connect to NVDA option on Braille Me, it will not show up in this list.
- Now on your PC execute the application with the name "brailleme-v0.5.nvda-addon" to install the Add-on for Braille Me in NVDA. As soon as the add-on installation is complete you are ready for connecting with NVDA.
- Now go to NVDA settings -> Preferences -> Braille Settings



- In the Braille Settings window Select the braille display as " Braille Me" and click on OK button.

## 17. FAQs

### 17.1. Prospective User

- **What is the weight and size of Braille Me?**

Braille Me weighs just 580 g and its dimensions are 18.8cm x 13.8cm x 2.9cm.

- **What are the contents of the box when I first receive my Braille Me?**

The package contains the Braille Me device, a printed user guide, a braille user guide, Standard-A to Micro-B USB Cable, AC Charger and an 8GB SD card pre-inserted into the device.

- **How fast is the braille refresh rate?**

The refresh rate for the device stands at 300 milliseconds, which is just as quick as the time required by the human eye for a blink.

- **How much sound does it make while typing and refreshing braille?**

The sound generated while typing is pretty much similar to any computer keyboard. Refreshing the braille itself hardly makes a soft noise and can easily be used in a classroom environment.

- **What are the features of the stand-alone mode?**

In this mode, the device displays the content of files stored on an SD card. You can access previously prepared files from the SD card or create new files and save them for further use.

- **What is the maximum size of SD card supported? What file formats are supported?**

The device supports a card with a maximum storage of 16GB in an FAT-32 file system only. File formats supported by Braille Me are ".TXT" and ".BRF" encoded in 'ANSI (ASCII)'.

- **Does it support text to braille conversion?**

There is no on-board software to cater to this need at the moment. However, we are planning to facilitate the translation in future versions of the device. As for now, we

have provided the 'Braille Me translator', a desktop application to convert your files into any of the compatible formats and then transfer them onto the SD card for use.

- **How is Braille Me so low cost as compared to other braille displays?**

Most other braille displays use piezo-electric technology for their braille cells, which is an expensive approach. Innovision has developed and patented a unique magnetic framework which reduces cost immensely while keeping the functionality intact. Also, cost optimization has been implemented at every stage from manufacturing to distribution to cater to a larger customer segment.

- **Does it have audio input or output text to speech?**

No, audio and speech recognition hasn't been incorporated into the device. Braille Me is specifically designed to cater to a person's braille requirements.

- **With which screen readers does the device work?**

We have provided support for NVDA for Windows, BrailleBack for Android and Voiceover (currently in development) for MacOS and iOS.

- **How many bluetooth devices can be paired with Braille Me?**

Braille Me supports a maximum of four paired devices at a time.

## 17.2. First time user

- **What is the proper orientation of the device?**

Place the device on a flat surface in front of you with the row of braille cells farther away from you and the sloping edge nearer to you. This is the proper operational orientation.

- **Why is the device 6 dot and not 8 dot? How do you show cursor in 6 dot?**

The pressing dilemma at hand was whether to go for an 8 dot system for its utility or a 6 dot device for its cost efficacy. Therefore, we came up with a solution to integrate the cursor in the 6 dot module, thus, keeping the device operational and efficient at a lower cost while also being more accessible to the public.

There are two modes of displaying the cursor: In the first mode, the cursor blinks on the display, with the pins of the character being highlighted upright while the rest of the pins in periodic up and down motion. In the second mode, the manually triggered mode that is, the user has to press the Up + Down navigation keys simultaneously which results in a blank screen with only the cell accommodating the cursor to show up. Press the same combination keys again to revert changes. Refer to the manual for more details.

- **How long does the product work on batteries before it needs a recharge?**

The product takes about 1.5 hours to charge completely and following that, it can be used continuously for 10-12 hours before another recharge.

- **How do I pair a device via Bluetooth?**

First go to 'Bluetooth; option in home screen, then go to 'pair a new device' option. As you enter this menu item Braille Me will show a message – 'waiting for pair request'. Initiate pairing from the smartphone, and you will hear a sound once pairing is completed on the smartphone. Your smartphone might ask to confirm the pairing, please go ahead and press OK.

Wait for a few secs until Braille Me changes its message from "waiting for pair request" to an edit box asking "Enter paired device name." Enter a short name which you can use to identify your smartphone.

Once you receive a notification on Braille Me saying – "Paired to device name," the pairing process is complete.

- **Where can I find the product demonstration videos?**

To view the demo videos, follow this URL link:

<https://www.youtube.com/channel/UCmkFbfTl7MKUS2PjffX4ppg/videos>

- **Where can I find Braille books online?**

1. Sugamya Pustakalaya

<https://library.daisyindia.org/NALP/welcomeLink.action>

2. NLS

<https://www.loc.gov/nls/>

3. Bookshare Braille Central

<https://www.bookshare.org/cms/help-center/training-and-resources/braille>

- **Can I use my Kindle app on my Android smartphone?**

Make sure your BrailleBack or Voiceover is running in the background. Now on the Amazon Kindle app, browse for the book you are looking for. You can either pay for a subscription or read any of the free books available. Once a certain page is open, the screen reader reads the contents of the page and reproduces it on the Braille Me display.

- **How do I clean the braille display if needed?**

Brushing away the display is a good option. Might also use a soft piece of cloth and press gently. Strictly avoid using water/Colin and other related wet media for cleaning purposes.

- **How do I read a document in my native language on Braille Me?**

You can simply run the Braille Me translator software which converts the file into any of the supported formats. Once converted, copy it into your SD card and plug it into Braille Me. Now you can browse to the file and start reading it.

### **17.3. Existing User**

- **What are the warranty plans for the product and/or any of its accessories?**

We provide a 1 year limited warranty for all accessories including the Braille Me unit itself.

- **My Braille Me has trouble pairing with my mobile device?**

One of the various possible issues may be that there are already 4 active devices paired to your Braille Me or you are trying to pair a device with a name that had already been reserved for some other device. To rectify the situation, you can delete a paired device from your Braille Me to accommodate the new device and try a different name for the former and latter situations respectively. For other issues refer to the user manual or contact customer support.

- **My computer doesn't recognize Braille Me as mass media storage?**

This may be due to the fact that the user hasn't followed the proper procedure to connect the device with the desktop. As long as 'connected as a mass device' is not shown on the display, the device will not connect to the desktop. If even after the message is displayed, there is trouble over connection, try unplugging the USB cable and re-plugging it. If the problem persists, contact customer support.

- **One of my typing keys has stuck / There's a problem with one or more pins in the display panel?**

If a key is jammed, an error message is displayed on the screen indicating the user about the issue. You can try prying free the key but do not try too hard. If any of the dots are stuck try cleaning it using a soft brush or cloth. If the issue persists then contact customer support.

## **18. Appendices**

### **18.1. Warranty information**

Inceptor Technologies Pvt. Ltd's (Innovision's) warranty obligations for the Braille Me are limited to the terms set forth below:

Inceptor Technologies pvt. Ltd. is referred as INNOVISION henceforth.

INNOVISION warrants this hardware product against defects in materials and workmanship under normal use for a period of ONE (1) YEAR from the purchase by the original purchaser ("Warranty Period"). If a hardware defect arises and a valid claim is received by INNOVISION within the Warranty Period, at its option and to the extent permitted by law, INNOVISION will either:

Repair the product at no charge, using new or refurbished replacement parts (or)

Exchange the product with a product that is new or which has been manufactured from new or serviceable used parts and is at least functionally equivalent to the original product.

A replacement product or part provided by INNOVISION assumes the remaining warranty of the original product or thirty (30) days from the date of replacement or repair, whichever provides longer coverage for you. When a product or part is exchanged, any replacement item becomes your property and the replaced item becomes INNOVISION's property. Parts provided by INNOVISION in fulfillment of its warranty obligation must be used in products for which warranty service is claimed.

## EXCLUSIONS AND LIMITATIONS

This Limited Warranty applies only to the hardware product manufactured by INNOVISION that can be identified by the "INNOVISION" trademark, trade name, or logo affixed to it. INNOVISION electronic products are also identified by their serial numbers. The Limited Warranty does not apply to any non-INNOVISION hardware product or any software, even if packaged or sold with the INNOVISION hardware. Manufacturers, suppliers, or publishers, other than INNOVISION, may provide their own warranties to the end user purchaser; but INNOVISION, in so far as permitted by law, provides their products "as is." Software distributed by INNOVISION with or without the INNOVISION brand name (including, but not limited to system software) is not covered under this Limited Warranty. Refer to the licensing agreement accompanying the software for details of your rights with respect to its use. INNOVISION does not warrant that the operation of the product will be uninterrupted or error-free. INNOVISION is not responsible for damage arising from failure to follow instructions relating to the product's use.

This warranty does not apply:

to damage caused by use with non-INNOVISION authorized products

to damage caused by accident, abuse, misuse, flood, fire, earthquake, or other external causes

to damage caused by operating the product outside the permitted or intended uses described by INNOVISION

to damage caused by service (including upgrades and expansions) performed by anyone who is not a representative of INNOVISION

to a product or part that has been modified to alter functionality or capability without the written permission of INNOVISION

if the serial number has been removed or defaced.

TO THE EXTENT PERMITTED BY LAW, THIS WARRANTY AND THE REMEDIES SET FORTH ABOVE ARE EXCLUSIVE AND IN LIEU OF ALL OTHER WARRANTIES, REMEDIES AND CONDITIONS, WHETHER ORAL OR WRITTEN, STATUTORY, EXPRESS OR IMPLIED. AS PERMITTED BY APPLICABLE LAW, INNOVISION SPECIFICALLY DISCLAIMS ANY AND ALL STATUTORY OR IMPLIED WARRANTIES, INCLUDING, WITHOUT LIMITATION, WARRANTIES OF MERCHANTABILITY AND FITNESS FOR A PARTICULAR PURPOSE AND WARRANTIES AGAINST HIDDEN OR LATENT DEFECTS. IF INNOVISION CANNOT LAWFULLY DISCLAIM STATUTORY OR IMPLIED WARRANTIES, THEN TO THE EXTENT PERMITTED BY LAW, ALL SUCH WARRANTIES SHALL BE LIMITED IN DURATION TO THE DURATION OF THE EXPRESS WARRANTY AND TO THE REPAIR OR REPLACEMENT SERVICE AS DETERMINED BY INNOVISION IN ITS SOLE DISCRETION. No INNOVISION reseller, agent, or employee is authorized to make any modification, extension, or addition to this warranty. If any term is held to be illegal or unenforceable, the legality or enforceability of the remaining terms shall not be affected or impaired.

EXCEPT AS PROVIDED IN THIS WARRANTY AND TO THE MAXIMUM EXTENT PERMITTED BY LAW, INNOVISION IS NOT RESPONSIBLE FOR DIRECT, SPECIAL, INCIDENTAL, OR CONSEQUENTIAL DAMAGES RESULTING FROM ANY BREACH OF WARRANTY OR CONDITION, OR UNDER ANY OTHER LEGAL THEORY, INCLUDING BUT NOT LIMITED TO LOSS OF USE; LOSS OF REVENUE; LOSS OF ACTUAL OR ANTICIPATED PROFITS (INCLUDING LOSS OF PROFITS ON CONTRACTS); LOSS OF THE USE OF MONEY; LOSS OF ANTICIPATED SAVINGS; LOSS OF BUSINESS; LOSS OF OPPORTUNITY; LOSS OF GOODWILL; LOSS OF REPUTATION; LOSS OF, DAMAGE TO, OR CORRUPTION OF DATA; OR ANY INDIRECT OR CONSEQUENTIAL LOSS OR DAMAGE HOWSOEVER CAUSED INCLUDING THE REPLACEMENT OF EQUIPMENT AND PROPERTY, ANY COSTS OF RECOVERING, PROGRAMMING OR REPRODUCING ANY PROGRAM OR DATA STORED IN OR USED WITH THE INNOVISION PRODUCT, AND ANY FAILURE TO MAINTAIN THE CONFIDENTIALITY OF DATA STORED ON THE PRODUCT. THE FOREGOING LIMITATION SHALL NOT APPLY TO DEATH OR PERSONAL INJURY CLAIMS, OR ANY STATUTORY LIABILITY FOR INTENTIONAL AND GROSS NEGLIGENT ACTS AND/OR OMISSIONS. INNOVISION DISCLAIMS ANY

REPRESENTATION THAT IT WILL BE ABLE TO REPAIR ANY PRODUCT UNDER THIS WARRANTY OR MAKE A PRODUCT EXCHANGE WITHOUT RISK TO OR LOSS OF PROGRAMS OR DATA.

#### OBTAINING WARRANTY SERVICE

Please access and review the online help resources referred to in the documentation accompanying this hardware product before seeking warranty service. If the product is still not functioning properly after making use of these resources, please send an e-mail to: [customercare@innovisiontech.co](mailto:customercare@innovisiontech.co) for instructions on how to obtain warranty service. You must follow INNOVISION's warranty procedures.

INNOVISION will maintain and use customer information in accordance with the INNOVISION Customer Privacy Policy.

If your product is capable of storing software programs, data, and other information, you should make periodic backup copies of the information contained on the product's hard drive or other storage media to protect the contents and as a precaution against possible operational failures. Before you deliver your product for warranty service, it is your responsibility to keep a separate backup copy of the contents, and disable any security passwords. IT IS POSSIBLE THAT THE CONTENTS ON THE DEVICE BEING SERVICED WILL BE LOST OR REFORMATTED IN THE COURSE OF WARRANTY SERVICE, AND INNOVISION AND ITS AGENTS ARE NOT RESPONSIBLE FOR ANY DAMAGE TO OR LOSS OF PROGRAMS, DATA, OR OTHER INFORMATION CONTAINED ON THE MEDIA OR ANY PART OF THE PRODUCT SERVICED.

Your product will be returned to you configured as originally purchased, subject to applicable updates. You will be responsible for reinstalling all other software programs, data, and passwords. Recovery and reinstallation of software programs and user data are not covered under this Limited Warranty.

#### Return Policy

If you are not satisfied with your product, please call the distributor from where you purchased for a Return Material Authorization (RMA) request within 30 calendar days of the receipt of the product. The product must be returned to the distributor within 15 calendar days of the issuance of the RMA. All products must be in satisfactory condition packed in the original, unmarked packaging including any accessories, manuals, documentation, and registration that shipped with the product. Less than satisfactory condition includes but is not limited to scratched product, damaged packaging, and missing accessories (power adaptors, CDs, manuals, etc.). Items received in non-resalable condition will not be accepted and will be returned. INNOVISION may refuse a product return if the Return Authorization Number is not written on the outside of the shipping container.

**Inceptor Technologies Pvt. Ltd. (INNOVISION)**

**CM09, SINE**

**3<sup>rd</sup> floor CSRE bldg., IIT Bombay**

**Powai, Mumbai, India.**

**Phone: +91 – 829-140-6811**

**E-mail: [customercare@innovisiontech.co](mailto:customercare@innovisiontech.co)**

**Web: [www.innovisiontech.co](http://www.innovisiontech.co)**